



Land for Wildlife Forum

16th August 2013

Bryce Wilde
Executive Director
Natural Resources Commission

Private conservation

- **NSW over 90% of land managed outside of the reserve system**
- **Our biodiversity, our quality of life, our well being is dependent upon the passion and skills of private land managers and volunteers.**
- **The trick for government is to support and build on local efforts and to ensure public efforts are well targeted.**

Local Conservation



Regional Priorities



State Priorities

Land management trends

- **Nationally:**
- **65% of farms have native vegetation**
- **55% of those farms are protecting native vegetation**
- **4% increase in farmer conservation efforts from 2008 to 2010**
- **NSW over 10% farms have conservation agreements**

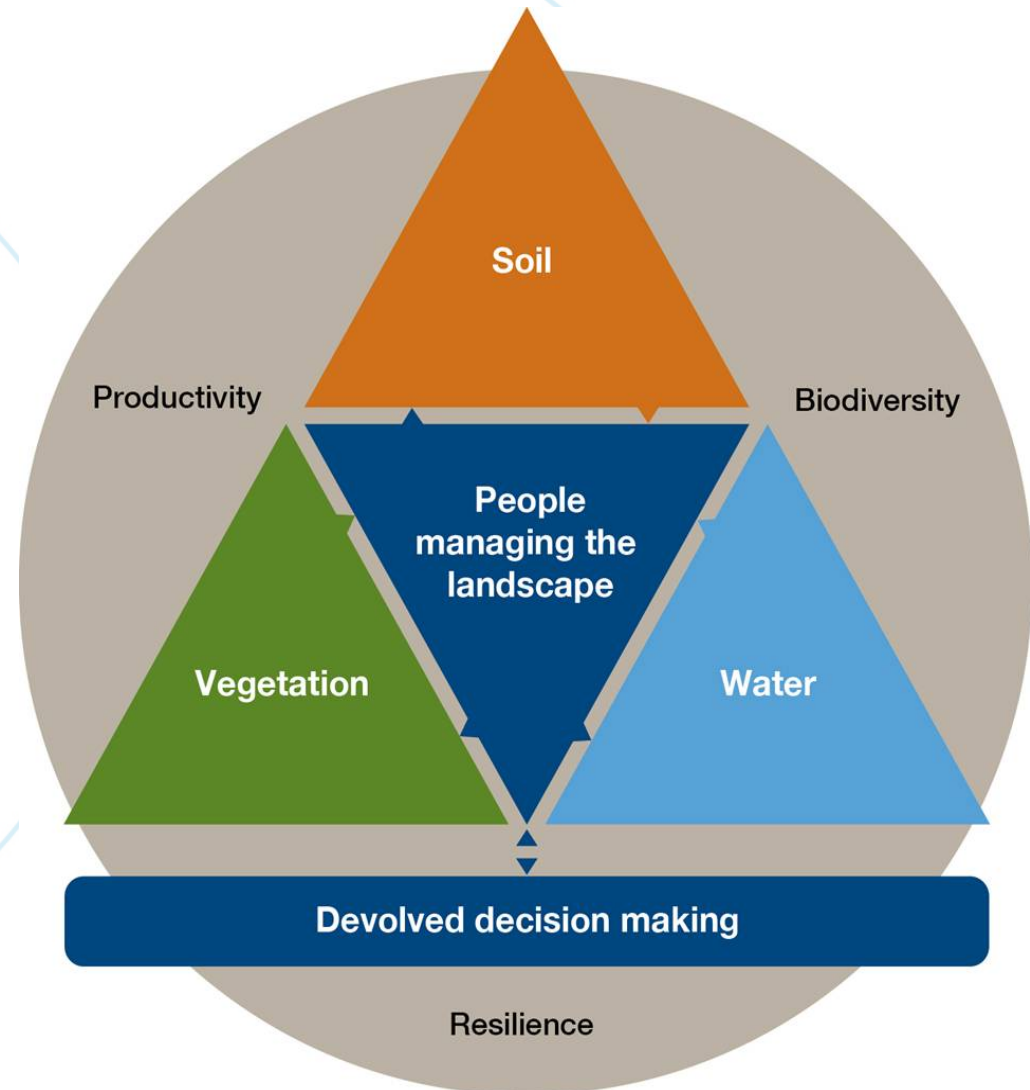
ABS estimates

NRM Issues know no boundaries

- Boundaries are man made
 - Need to work cross boundaries and cross organisations to achieve lasting outcomes
- Biodiversity is everyone's business and every bit counts

Natural Resources Commission

- **Where should we head?**
(NRC- goals & targets)
- **How should we get there?**
(NRC - standards)
- **What's working, what isn't?**
(NRC - audit & review)
- **What needs fixing?**
(NRC- reporting)



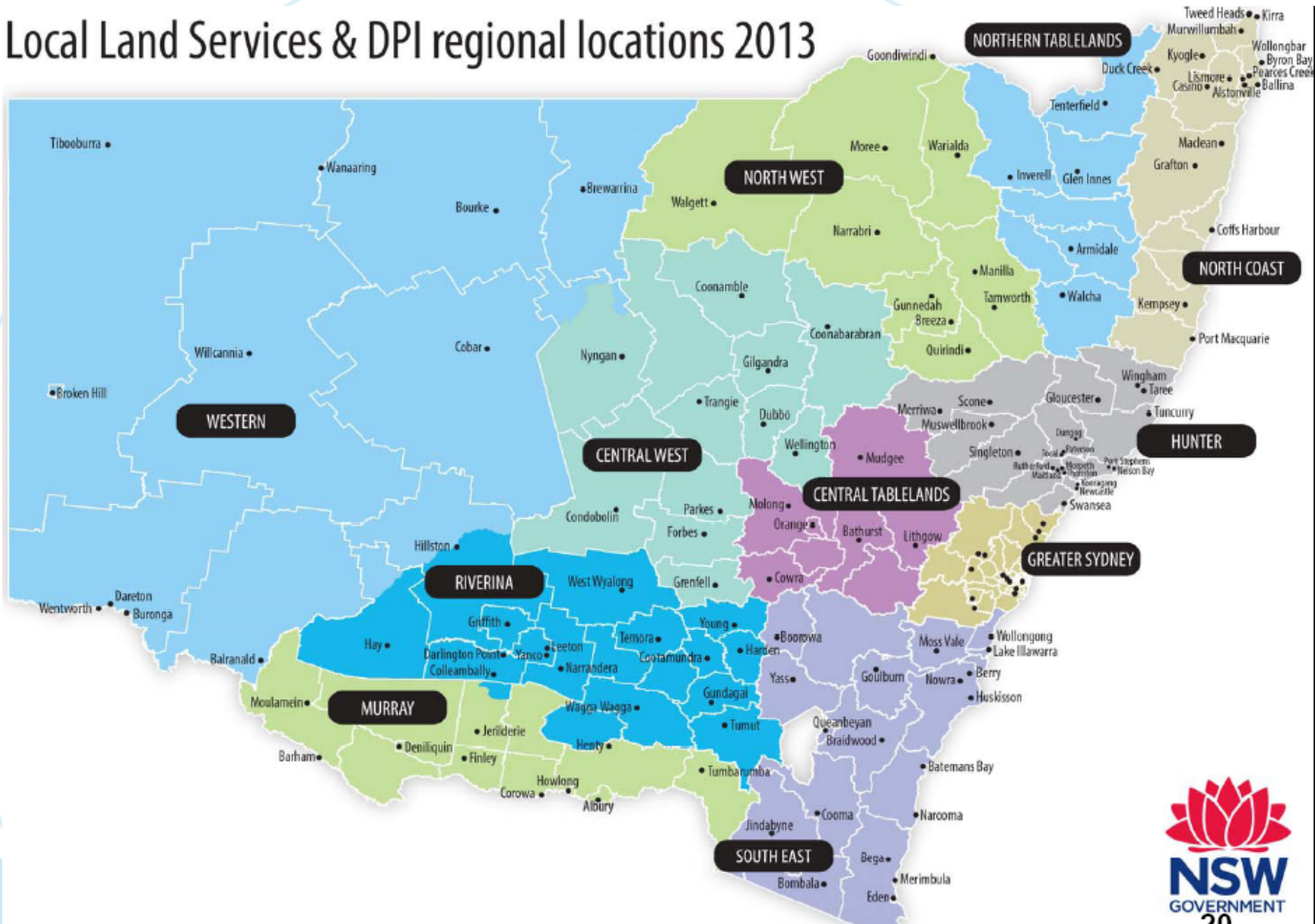
Local Land Services

- 11 regional organisations:
- Local knowledge , local people
local decisions
- Integrated service delivery
- Triple bottom line outcomes
- Collaborative and customer
focused
- Partnerships with local govt,
NGOs, govt agencies, industry

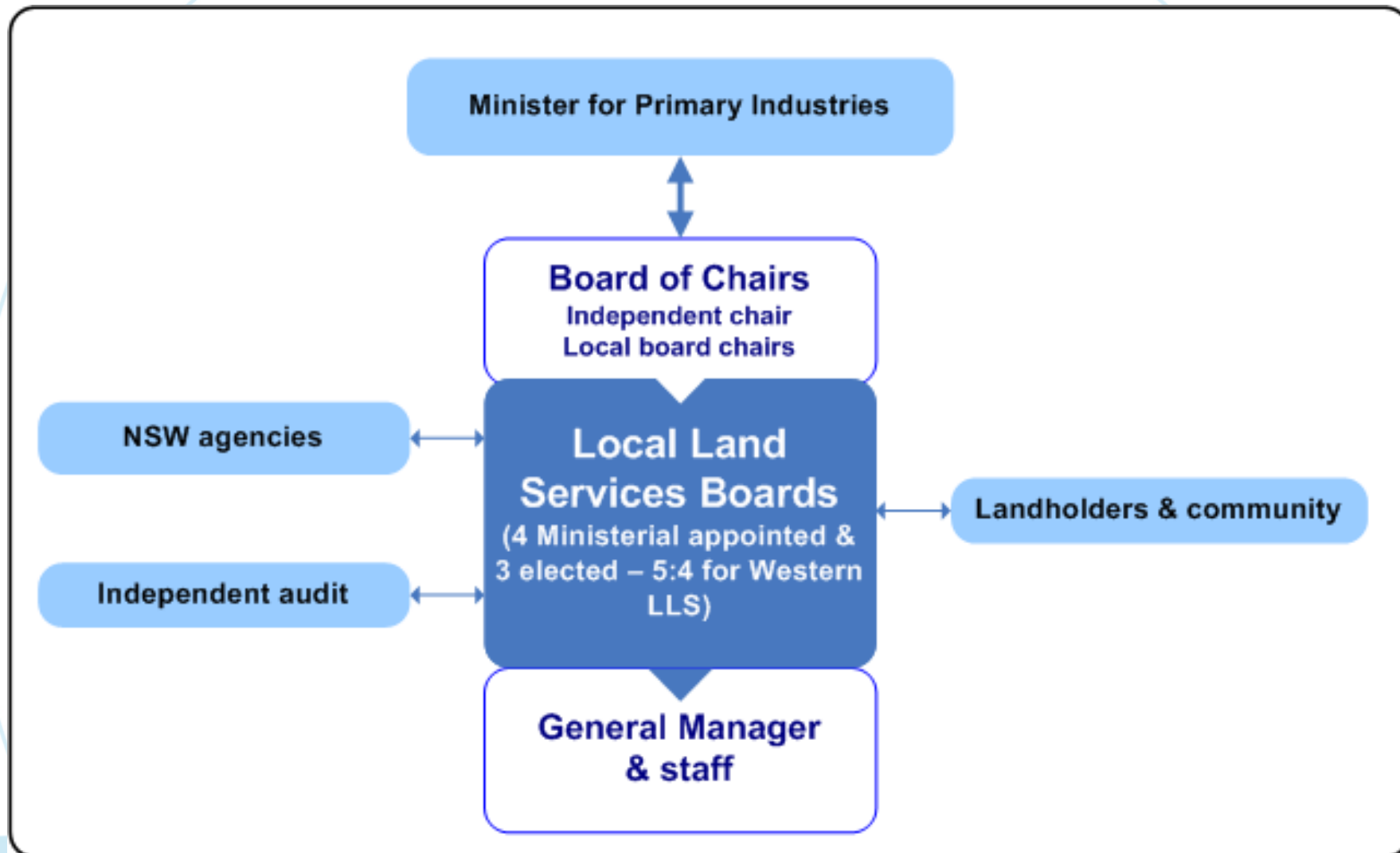


Local Land Services boundaries

Local Land Services & DPI regional locations 2013



Local Land Services governance structure



NRM strategic planning

- Upgraded Catchment Action Plans
- 10 year strategies for improving the health, productivity and resilience of our landscapes
- Will transfer to LLS

Why resilience?

New lens to solve old problems

Resilience helps planners understand:

- Complexity and change
- Linkages between livelihoods, lifestyles and landscapes
- What matters most in the landscape
- Where to intervene in the system



Better planning

Better sub regional planning

More inclusive

More integrated

More collaborative


More focused on learning & adapting

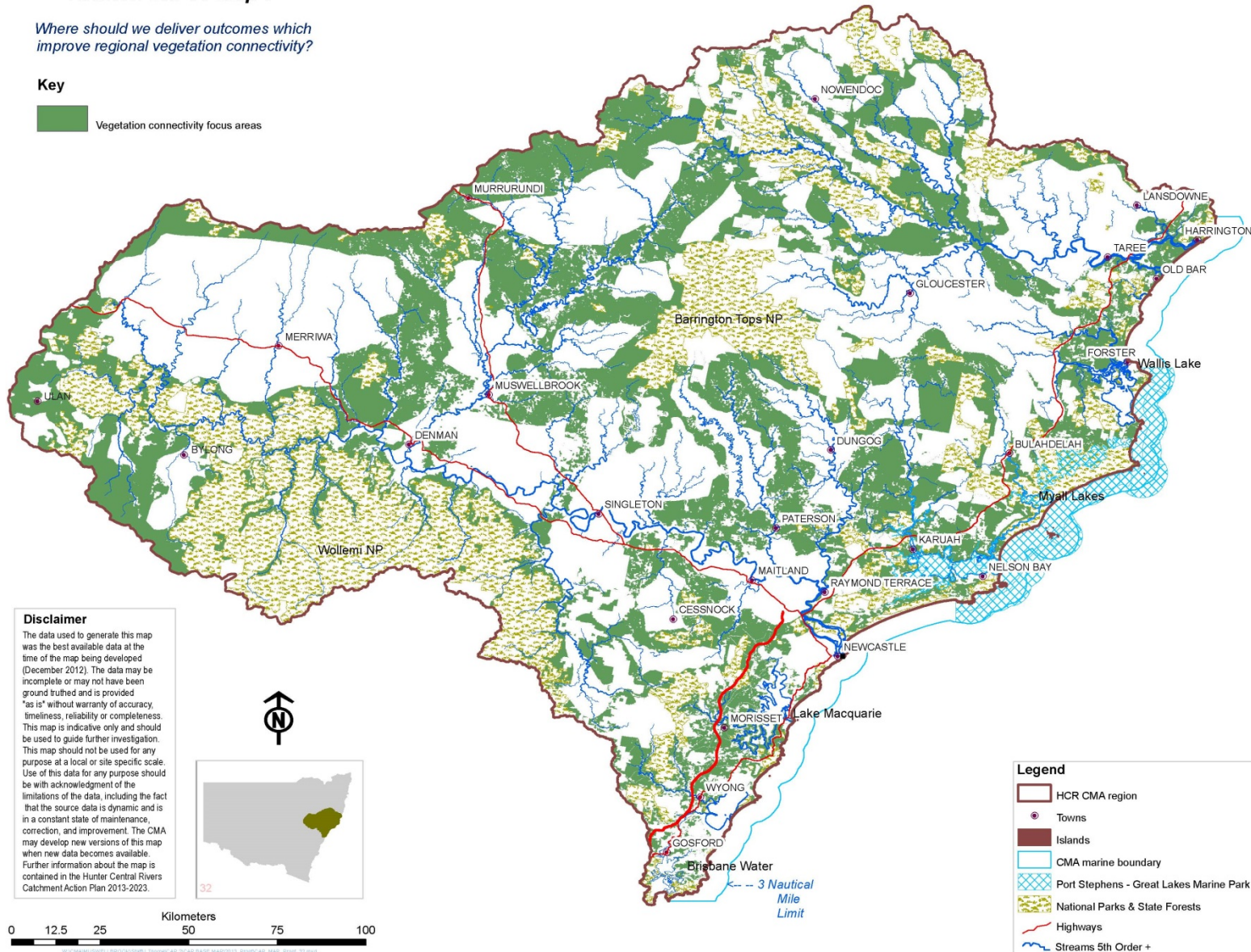
Hunter-Central Rivers CAP

BIODIVERSITY Map 1

Where should we deliver outcomes which improve regional vegetation connectivity?

Key

 Vegetation connectivity focus areas



Natural Resource Management round table

- **Progress has been made, but more needs to be done!**
- **Adopt people centric approach**
- **Skill up local groups and build trust**
- **Work from the farm scale up**
- **Focus more on how good NRM pays dividends for production**



NRM planning can only get you so far....

**....NRM is a people business,
the greatest driver of change
is behaviour change on the ground**